

Accommodation during the World Championships for Twirling 2018 in Lillehammer, Norway

All prices in this brochure are including breakfast

Birkebeineren Hotel & Apartments - fully booked

Birkebeinervegen 24, 2618 Lillehammer

Distance to the arena: 350 m

Total capacity: 337 persons

Dinner: 185 NOK per person per day

ROOM TYPE	PRICE PER PERSON PER NIGHT	NUMBER OF ROOMS / APARTMENTS
Single hotel room	795 NOK	2
Double hotel room	595 NOK	30
Triple hotel room	550 NOK	21 (triple + quad room in total)
Quadruple hotel room	490 NOK	
Juniorsuite (4 persons)	535 NOK	1
Double motel room (bathroom in the corridor)	315 NOK	4
Quadruple room (bathroom in the corridor)	315 NOK	1
Apartments for 3/4/5/6 persons	625 / 480 / 460 / 385 NOK	25 (all with 6 beds)



Lillehammer hotel - fully booked

Turisthotelveien 6, 2609 Lillehammer

Distance to the arena: 500 m

Total capacity: 630 persons

Dinner: 325 NOK per person per day

ROOM TYPE	PRICE PER PERSON PER NIGHT	NUMBER OF ROOMS
Single hotel room	900 NOK	10
Double hotel room	550 NOK	40
Triple hotel room*	450 NOK	100
Quadruple hotel room*	400 NOK	60

*There is a maximum of two *adults* on triple and quadruple rooms due to the size of the third and/or fourth bed.



Clarion Collection Hotel Hammer

Storgata 108, 2609 Lillehammer

Distance to the arena: 1 km

Total capacity: 243 persons

Dinner: 180 NOK per person per day

ROOM TYPE	PRICE PER PERSON PER NIGHT	NUMBER OF ROOMS
Single hotel room	1200 NOK	
Double hotel room	720 NOK	91
Triple hotel room	600 NOK	15
Quadruple hotel room	525 NOK	4

In total 110 rooms

33 double rooms + 1 quad room available



Mølla Hotell Lillehammer

Elvegata 12, 2609 Lillehammer

Distance to the arena: 1,2 km

Total capacity: 105 persons

Dinner: 250 NOK per person per day

ROOM TYPE	PRICE PER PERSON PER NIGHT	NUMBER OF ROOMS
Single hotel room	950 NOK	24
Double hotel room	675 NOK	14
Triple hotel room	585 NOK	11
Quadruple hotel room	540 NOK	5

20 single + 4 triple + 2 quad rooms available



Scandic Victoria Hotel Lillehammer

Storgata 84 b, 2609 Lillehammer

Distance to the arena: 1,2 km

Total capacity: 115 persons

Dinner: 275 NOK per person per day (must be pre-booked)

ROOM TYPE	PRICE PER PERSON PER NIGHT	NUMBER OF ROOMS
Single hotel room	950 NOK	15
Double hotel room	660 NOK	20
Triple hotel room	560 NOK	20

3 single + 3 double + 12 triple rooms available



First Hotel Breiseth Lillehammer

Jernbanegata 1-5, 2609 Lillehammer

Distance to the arena: 1,4 km

Total capacity: 128 persons

Dinner: The hotel is located in the centre of the city with many restaurants nearby.

ROOM TYPE	PRICE PER PERSON PER NIGHT	NUMBER OF ROOMS
Single hotel room	850 NOK	20
Double hotel room	595 NOK	35 (12 of them including sofabed for a third person)
Triple hotel room	530 NOK	6
Quadruple hotel room	445 NOK	2

15 single + 21 double rooms available



HI Lillehammer - Stasjonen Hotell

Jernbanetorget 4, 2609 Lillehammer

Distance to the arena: 1,5 km

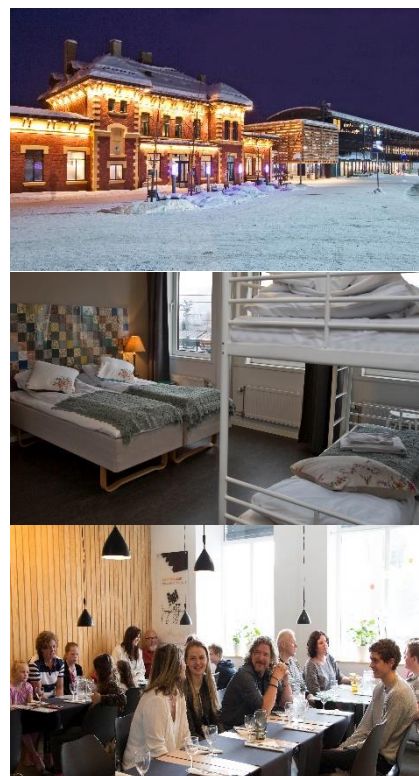
Total capacity: 93 persons

Dinner: 220 NOK per person per day (half price for children who are 12 years old and younger)

Selfcatering kitchen - free use

ROOM TYPE	PRICE PER PERSON PER NIGHT	NUMBER OF ROOMS
Single hotel room	-	-
Double hotel room	545 NOK	20
Triple hotel room	-	-
Quadruple hotel room	350 NOK	7
Quintuple hotel room	350 NOK	5

3 double rooms available



Hunderfossen Hotell & Resort

Fossekroveien 17, Jernbanetorget 4, 2625 Fåberg

Distance to the arena: 15,3 km

Total capacity: 149 (179 if 30 persons are under 10 years old)

Dinner: 200 NOK per person per day (half price children 3-12 years old)

ROOM TYPE	PRICE PER PERSON PER NIGHT	NUMBER OF ROOMS / APARTMENTS
Single hotel room*	795 NOK	20
Double hotel room*	595 NOK	20
Triple hotel room*	509 NOK	20
Cabin for 4 persons	350 NOK	7
Apartments (6 persons)	350 NOK	4
Apartments (8 persons)	350 NOK	6

*15 of the hotel rooms has 2 extra beds for children under 10 for additional 250 NOK per child)

Many rooms/cabins still available. On request.



~~Montebellosenteret~~

~~Kurstedvegen 5, 2610 Mesnali~~

~~Distance to the arena: 16,7 km~~

~~Total capacity: 86 persons~~

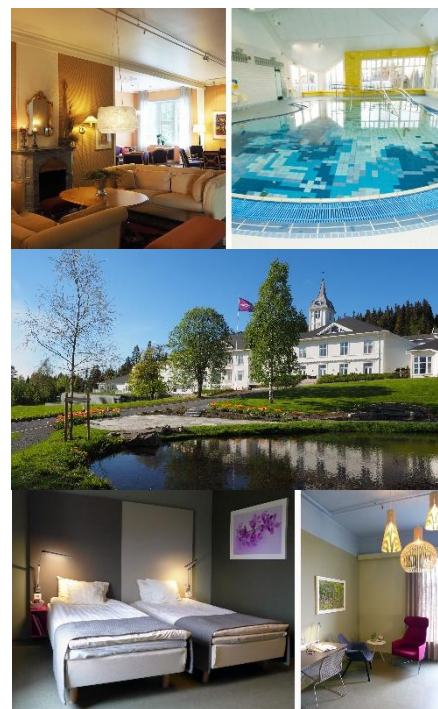
~~Dinner: Dinner is included in the price~~

ROOM TYPE	PRICE PER PERSON PER NIGHT	NUMBER OF ROOMS
Single hotel room	1200 NOK	9
Double hotel room*	950 NOK	35

~~*20 of the double rooms can be merged into 10 quadruple rooms with door between the two rooms. The price for quadruple room is the same as double room; 950 NOK per person per night.~~

~~There are 7 extra beds that can either be placed on a double room, making it a triple room at 850 NOK per person per night or they could also be placed into the combined double rooms (=quadruple rooms), making quintuple room at 890 NOK per person per night.~~

Rooms released.



~~Honne Hotell og Konferansesenter AS~~

~~Honnevegen 60, 2836 Biri~~

~~Distance to the arena: 25 km~~

~~Total capacity: 105 persons~~

~~Dinner: 275 NOK per person per day day
(must be pre-booked)~~

ROOM TYPE	PRICE PER PERSON PER NIGHT	NUMBER OF ROOMS
Single hotel room	975 NOK	23
Double hotel room	825 NOK	38
Triple hotel room	825 NOK	2

Rooms released.



Quality Hotel Strand

Strandgaten 15, 2815 Gjøvik

Distance to the arena: 47 km

We offer our Twirling-guests FREE bus shuttle from our hotel to the arena (Håkons hall, Lillehammer) **roundtrip**. Departures from Gjøvik in morning and departures from Lillehammer late afternoon/evening. Estimated travel time 45 minutes.

Total capacity: 270 persons

Dinner: 185 – 245 NOK per person per day (price depending on choice of menu)

ROOM TYPE	PRICE PER PERSON PER NIGHT	NUMBER OF ROOMS
Single hotel room	930 NOK	10
Double hotel room	565 NOK	100
Triple hotel room	443 NOK	20

Rooms released.



Clarion Collection Hotel Grand

Jernbanegata 5, 2821 Gjøvik

Distance to the arena: 47 km

We offer our Twirling-guests FREE bus shuttle from our hotel to the arena (Håkons hall, Lillehammer) **roundtrip**. Departures from Gjøvik in morning and departures from Lillehammer late afternoon/evening. Estimated travel time 45 minutes.

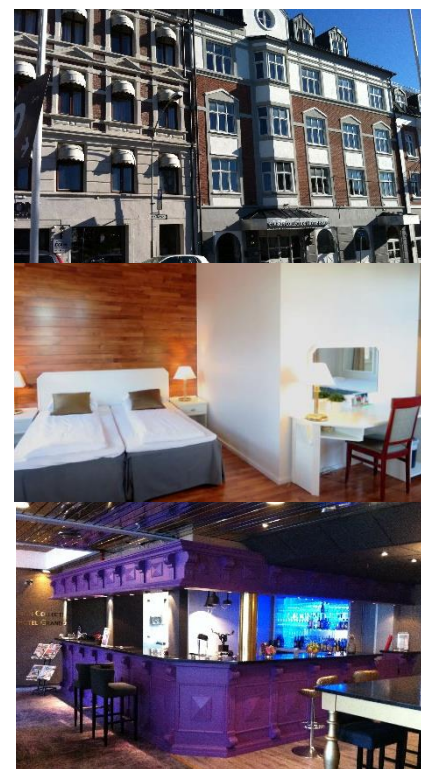
Total capacity: 137 persons

Dinner: Supper* included in the price

ROOM TYPE	PRICE PER PERSON PER NIGHT	NUMBER OF ROOMS
Single hotel room	930 NOK	21
Double hotel room	565 NOK	46
Triple hotel room	443 NOK	8

***Supper includes one hot meal, soup, bread and salad**

Rooms released.



~~Gjøvik Vandrerhjem Hovdetun SA~~

~~Parkvegen 8, 2819 Gjøvik~~

~~Distance to the arena: 47 km~~

~~Total capacity: 165 persons~~

~~Dinner: 160 - 200 NOK per person per day~~

ROOM TYPE	PRICE PER PERSON PER NIGHT	NUMBER OF ROOMS
Double room	460 NOK	14
Quad room	300 - 350 NOK	7
Cabin with 2 beds	760 NOK	6
Cabin with 3 beds	350 NOK	2
Cabin with 4 beds	350 NOK	2
Cabin with 6 beds	350 NOK	2

Rooms released.



~~Scandic Ringsaker~~

~~Kåtorpveien 1, 2320 Furnes~~

~~Distance to the arena: 57 km~~

~~Total capacity: 200 persons~~

~~Dinner: 250 NOK per person per day~~

ROOM TYPE	PRICE PER PERSON PER NIGHT	NUMBER OF ROOMS
Single room	890 NOK	20
Double room	545 NOK	60
Triple room	470 NOK	20

Rooms released.



Please place your bookings at wctwirling2018@musikkorps.no as soon as possible.

The rooms are about to be released to the public and there may no longer be vacancy. The Lillehammer region is a popular tourist destination at Easter.

It will be possible to buy lunch in the arena. Check out our website: musikkorps.no/wctwirling2018

1 NOK \approx 0,10 EUR per January 2018

1 NOK \approx 0,12 USD per January 2018